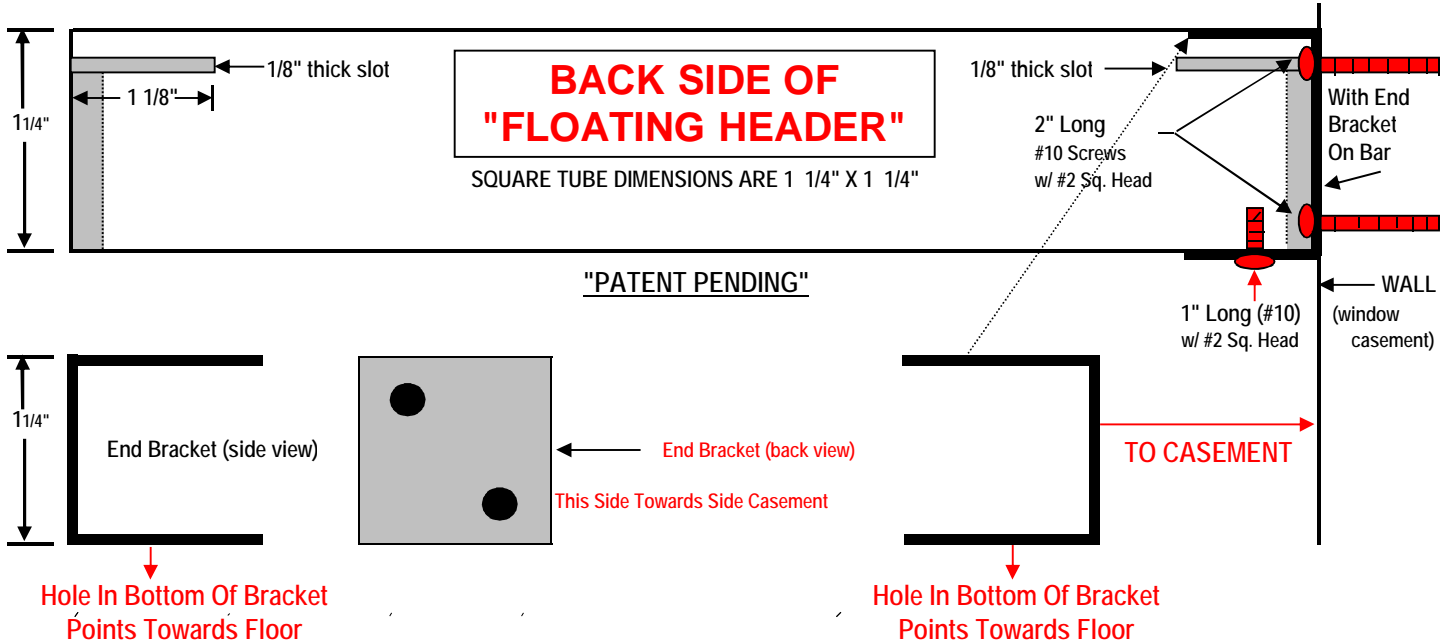


"FLOATING HEADER"

CENTER SUPPORT SYSTEM INSTALLATION INSTRUCTIONS

THIS IS AN EXAMPLE OF A MEDIUM DUTY 1 1/4" X 1 1/4" CENTER SUPPORT BAR, ALL "FLOATING HEADERS" ARE CONFIGURED THE SAME, ONLY THE DIMENSIONS ARE DIFFERENT



INCLUDED YOU WILL FIND THE FOLLOW ITEMS TO COMPLETE YOUR INSTALLATION:

1. THE "FLOATING HEADER"
2. TWO SIDE BRACKETS (THESE WILL ATTACH TO THE SIDE CASEMENT)
3. **FOUR 2" (# 10) SQUARE DRIVE TEK SCREWS (WHITE PAINTED HEADS)** USED TO ATTACH SIDE BRACKETS
4. **TWO 1" (# 10) SQUARE DRIVE TEK SCREWS (WHITE PAINTED HEADS)** USED TO ATTACH THE BOTTOM OF SIDE BRACKETS TO "FLOATING HEADER"
5. **AMPLE NUMBER OF 1" (#10) SQUARE DRIVE TEK SCREWS TO BE USED TO ATTACH YOUR WINDOW COVERING BRACKETS TO THE "FLOATING HEADER" (NON PAINTED SCREW HEADS)**

NOTE: YOU WILL NEED AN ELECTRIC DRILL AND A **# 2 SQUARE DRIVER BIT (ROBERTSON BIT)** FOR THE ABOVE DESCRIBED SCREWS, THEY MAKE FOR A MUCH CLEANER INSTALLATION AND ARE MUCH EASIER TO DRIVE INTO METAL.

INSTALLATION INSTRUCTIONS:

- ★ You can attach your product to the front or from the bottom of the "Floating Header". If installing an **Arch and a Blind**, try mounting brackets for both to the front of the "Floating Header" or **Arch to the top & Blind from the bottom**.
- ★ Screws mounting side brackets must be securely attached, if drywall make sure screws pass through into wood or metal!
- ★ Mark and install side brackets 1/16" lower than the height you would like the "Floating Header" to be. Be sure to leave at least 1/8" space on back side of bracket to allow "Floating Header" to slip over brackets.
- ★ After brackets are installed position the "Floating Header" so that the horizontal slots on the back can be slipped over the top of the side brackets, it will now drop down approximately 1/4" and the bottom of "Floating Header" should be sitting on bottom of side bracket. At this time you must secure the "Floating Header" to the brackets by driving the 1" (#10) sq. drv tek screws through bottom hole of brackets into "Floating Header". (see diagram above)
- ★ You can now attach your window covering hardware with screws provided and enjoy your unique installation!!!
- ★ Helpful Hint: before securing "Floating Header" to side brackets take it back down and install your window covering brackets, as it is much easier to drive-in tek screws using the floor or work surface.

FOR TECHNICAL QUESTIONS PLEASE CALL "THE ULTIMATE INSTALL" AT: 479-789-2501